

Brock



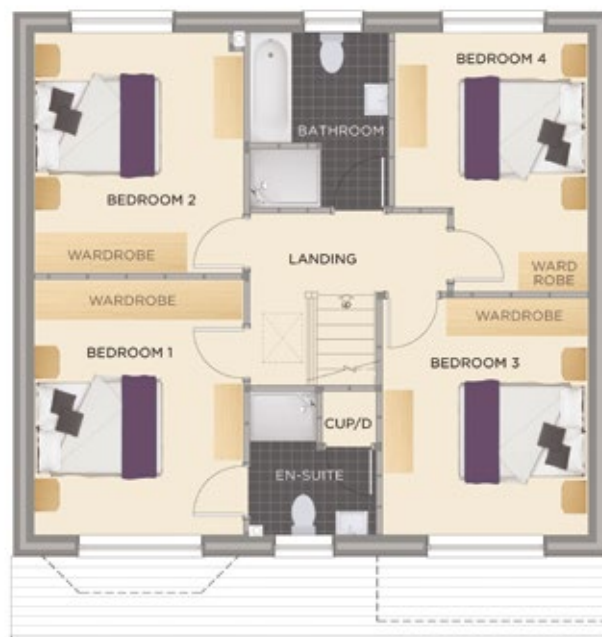
4 bedroom detached home with single integral garage

- Beautifully designed SieMatic kitchen with integrated NEFF appliances
- Open plan kitchen/dining/family area with French doors leading to a generous garden
- Spacious lounge with bay window aspect
- Utility and downstairs cloakroom
- 4 double bedrooms with master ensuite
- Large family bathroom with separate shower



GROUND FLOOR

Lounge 3.268m x 4.680m 10' 8" x 15' 4"	Utility 1.627m x 2.608m 5' 3" x 8' 6"	WC 0.887m x 1.965m 2' 9" x 6' 5"
Kitchen/Dining 6.913m x 3.683m 22' 6" x 12' 0"	Garage 3.385m x 6.110m 11' 1" x 20' 0"	



FIRST FLOOR

Bedroom 1 3.271m x 3.990m 10' 7" x 13' 0"	Bedroom 3 3.219m x 3.707m 10' 5" x 12' 1"	Bathroom 2.170m x 2.737m 7' 1" x 8' 9"
Bedroom 2 3.271m x 3.764m 10' 7" x 12' 3"	Bedroom 4 3.031m x 4.046m 9' 9" x 13' 2"	Ensuite 1 1.982m x 2.259m 6' 5" x 7' 4"

Benefits include...

Integral garage | Internal oak doors | Turfed front and rear gardens | Fence and gate to rear gardens
Large block paved driveway | French doors to patio | Paved patio | White painted staircase with Oak stained handrail
LED lamps | External lights | Extensive tiling to bathrooms | SieMatic kitchen | NEFF kitchen appliances | Utility room
Security alarm | External tap | Heated towel rails | 10 year warranty... and so much more.
See Create Homes specification sheet for details.

The dimensions given are approximate only. Artist impressions are for illustrative purposes only.